

Shanghai Convention & Exhibition Center (SHCEC)

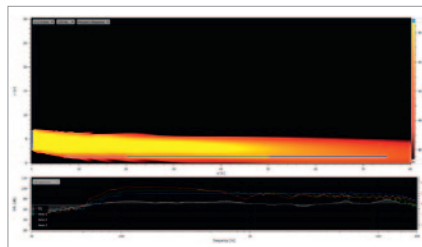
CUSTOMER
City of Shanghai



The need to cover a wider variety of program materialy

The Shanghai Conference and Exhibition Centre consists of a number of halls up to 80 m in length requiring sound reinforcement. EVO-pbs loudspeakers were considered for the project due to their high power output and excellent speech intelligibility compared to other digitally controlled line sources.

Two EVO-pbs 2000 were deployed in each of the three smaller rooms (with a floor area of around 800 m² each), whereas the larger, 2500 m² hall with a seated capacity of around 5000 was furnished with a pair of EVO-pbs 4000 and a pair of EVO-pbs 2000.



Acoustic simulation for the larger hall



Speaker EVO-pbs

ABOUT THE VENUE

Shanghai Convention & Exhibition Centre is a multipurpose business / conference / exhibition centre with a floor area of 38'000 m².

INSTALLED PRODUCTS

EVO-pbs loudspeakers were installed in various combinations for the different sized rooms. The total installation consisted of:

- 2 x EVO-pbs 4000
- 8 x EVO-pbs 2000 and
- 4 x EVO-pbs 1000

CVS'S CONTRIBUTION

- Delivery of EVO-pbs loudspeakers to schedule

CVS

clearvoice systems