

# Cathedral da Sé, Brazil

CUSTOMER

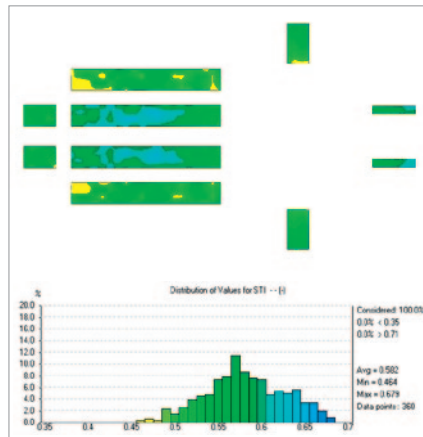
The Roman Catholic Diocese of São Paulo



## A single loudspeaker covers the entire Cathedral of da Sé

Complex cathedral acoustics present a major challenge for speech reinforcement, yet for this project Clearvoice Systems was able to develop a design concept around only a single active loudspeaker. The broad and even 120° horizontal dispersion combined with precise beamsteering algorithms which can create up to 6 independent beams from a single column delivered a solution that was able to solve the technical difficulties within the three-aisled basilica, as well as fitting within the budget.

After an intensive test regime, the Diocese of São Paulo concluded that both the speech intelligibility and all-round audio quality of this single loudspeaker solution were utterly convincing. Indeed, a modern distributed system with 30 passive loudspeakers that was installed alongside the EVO-pbs during the test phase was thoroughly outclassed by direct comparison.



EASE Simulation by CVS

This single EVO-pbs solution was able to provide compelling arguments not only for sound quality at every seat in the house, but also for cost of implementation, having eliminated the need for multiple delay lines and the associated cable works.

### ABOUT THE VENUE

- Length: 110 m
- Width: 46 m in the centre
- Main aisle height: > 30 m
- Height of towers: 92 m
- Maximum capacity: 8'000 persons

### INSTALLED PRODUCTS

- 1 x EVO-pbs 4000 for the central aisle and both side aisles. Coverage length up to 45 m
- 2 x EVO-LaB 2.0 for the choir stalls
- STI Value: 0.58 in the centre of the coverage area.

### CVS'S CONTRIBUTION

- Specification and Demonstration for the client
- EASE simulation and design
- Delivery of EVO-pbs and EVO-LaB systems to schedule
- System commissioning



clearvoice systems